

The product contains one or more of following materials:
Wood, metal, plastic.

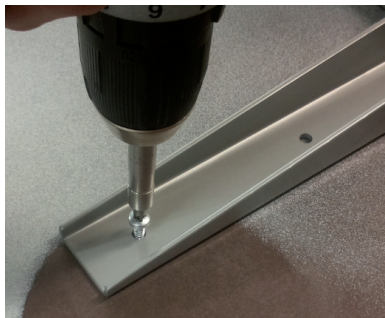
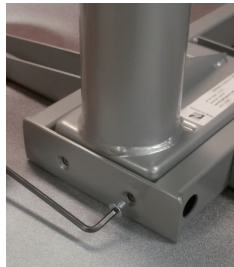




1. Screw the feet onto the legs



2. Place the frame on the table top and screw the legs onto the frame.



3. Screw the frame onto the table top and fasten the control box onto the table top, preferably in between the beams of the frame.

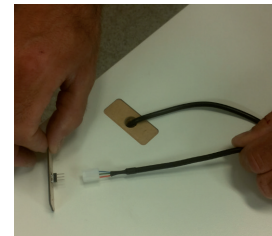


4. Connect the wires from the legs and the power wire to the control box. Also connect the hand control wire into the box.



5. Arrange the cables.

6. Turn the table and pull the hand control wire through the hole in the table top and connect it to the control unit.



7. Remove the protection film from both sides of the control unit and put it in place.

