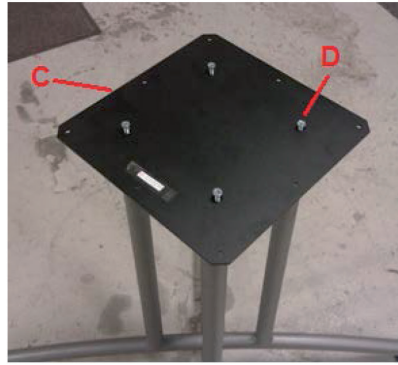
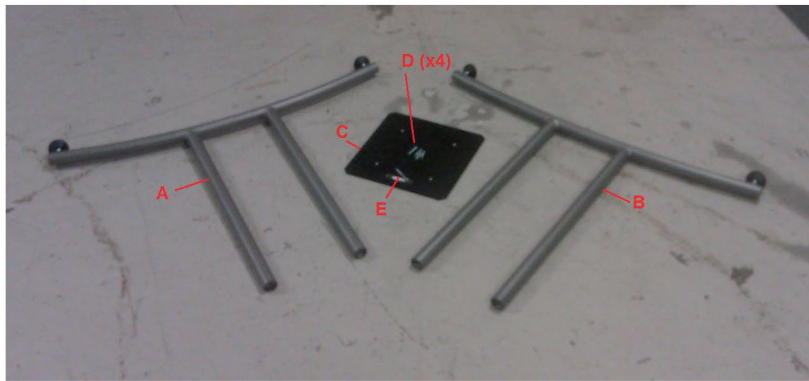


The product contains one or more of following materials:
Wood, metal, plastic.





Mount the table top onto the stand with wooden screws.

The shorter gable (A) with a threaded insert is being placed underneath the longer gable (B) viewed from the bottom. Use screw (E) to fixate (A) and (B).

Use screw (D) to fixate the mounting plate (C) to the gable tubes (A) and (B). Start by screwing them half way for easy assembling of the plate (C).