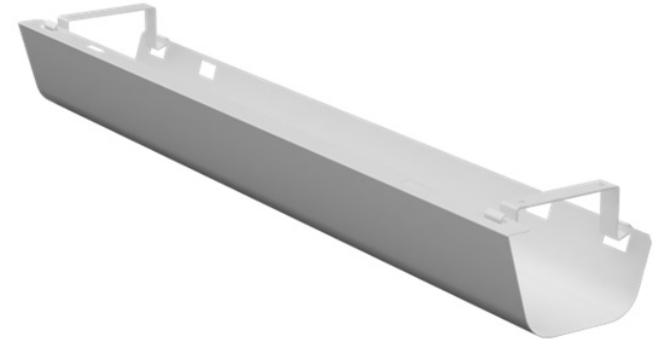


The product contains one or more of following materials:
Wood, metal, plastic.



Step 1.

Screw the two brackets on the bottom side of the table top. Measure together with the tray to get the right position. There are two different positions options for the bracket on each side and two different directions for the tray depending on other equipments on the table, such as desk screens, powerdots etc.



For desks without screens the tray is positioned as below, with the higher side outwards for a nice look, the tray is tiltable from both directions but easiest accessed from the inside.



Step 2.

Hook on the cable tray to the brackets.



For desks with screens the tray is positioned as below, with the shorter side outwards to give place to the screen brackets, the tray is tiltable from the inside.

